

# FRESH SEAFOOD

## PERISHABLE PACKAGING

---

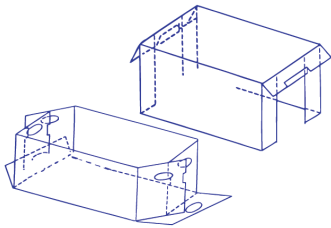
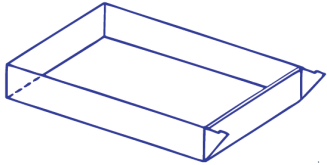


- Wax dip boxes
- Insulated shipping containers
- Curtain coated boxes
- Shipping supplies
- Plastic bags, baskets, and totes
- Hand trucks and pallet jacks

## MANUFACTURERS OF WAX DIP SEAFOOD BOXES

### BAIT TRAYS

- **Unvented Bait Tray - Special Order**  
24-7/8 x 13-1/4 x 4-15/16" Bellows Fold Leakproof Design (500/Unit)
- **1 Bushel Bait Tray - Special Order**  
20-1/2 x 14-7/8 x 5-1/2" Bellows Fold Leakproof Design (500/Unit)
- **Vented Bait Tray**  
24-1/8 x 14-7/8 x 5-1/2" (500/Unit)



### STAPLE-STYLE OYSTER BOXES

- 12-8 oz./100ct. 14-1/2 x 10-3/8 x 4-5/8" (1000/Unit)
- 1/2 Bushel 14-1/2 x 10-3/8 x 7" (1000/Unit Body & Lid)
- 4/5 Bushel 14-1/2 x 10-3/8 x 10-1/4" (250/Unit)
- 1 Bushel 16-1/4 x 12-1/8 x 10-1/8" (500/Unit Body & Lid)
- Special 4/5 Bushel 16-1/4 x 12-1/8 x 10-1/8" (250/Unit)

### ALSO AVAILABLE

- **1 pc. 1 Gallon Shipper**  
10-7/8 x 8 x 10-1/8" (560/Unit)
- **1 pc. 2 Gallon Shipper**  
14 x 10-1/2 x 10" (500/Unit)
- **1 pc. 1 Gallon Leak Proof Shipper**  
10-7/8 x 8 x 10-1/8" Wax Dipped (250/Unit)



# LIVE SOFT SHELL CRAB SHIPPER



## BODY AND LID

- Wax Dipped & Curtain Coated
- Staple-Style and Self-Locking
- 3-1/2" White Lid (250/Unit)
- 23 x 17 x 10" Body (250/Unit)
- 1/2 Tray Also Available (600/Unit)



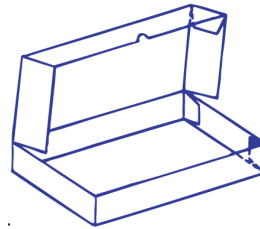
## TRAYS

- Wax Dipped
- 3 Heavy Duty Trays with Dividers
- Self Locking
- Drain Holes
- 250/Unit



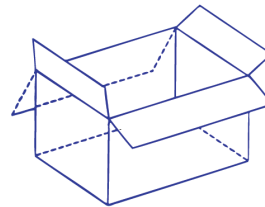
## SELF-LOCKING STEAMED CRAB SHIPPER

- Wax Dipped
- 1/2 Bushel Size
- 13 x 9-1/4 x 9-3/8"
- 560/Unit
- 1 Bushel Size
- 16-1/4 x 11-3/4 x 12-1/4"
- 280/Unit
- Custom Imprint Available



## FREEZER BOXES

- 10 lb. 125/Case
- White with Poly Coating
- Custom Imprint Available



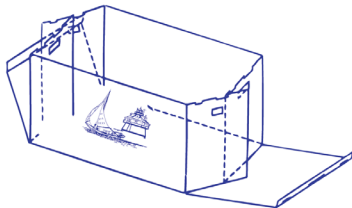
## FREEZER WRAP

- 6 x 8" Freezer Wrap – 5000/Case - Special Order
- 9 x 12" Freezer Wrap – 5000/Case - Special Order
- 8 x 8" Freezer Wrap – 5000/Case
- 10 x 14" Freezer Wrap – 5000/Case
- 8 x 10" Freezer Wrap – 5000/Case
- 12 x 12" Freezer Wrap – 5000/Case

## MASTER CARTON

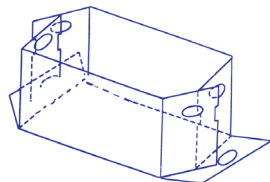
- 5/10 lb. Master
- 18-3/4 x 12-3/4 x 18" – 125/Unit
- Custom Imprint Available

# CURTAIN COATED SEAFOOD BOXES



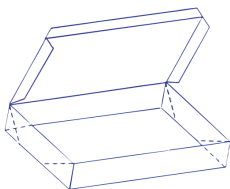
## SELF-LOCKING 40 LB. AND 50 LB.

- Curtain Coated Both Sides
- 50 lb. 22 x 15 x 10" – 280/Unit
- 40 lb. 22 x 15 x 6" – 560/Unit
- 50 lb. Self-Lock Leak Proof  
22 x 15 x 10" Body – 250/Unit



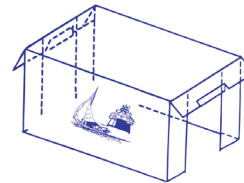
## STAPLE-STYLE 40 LB., 50 LB., AND 100 LB. BODY

- Curtain Coated Both Sides
- 100 lb. 38-1/2 x 15-15/16 x 11-15/16 – 260/Unit
- 50 lb. 22 x 15 x 10 – 280/Unit
- 40 lb. 22 x 15 x 6 – 400/Unit



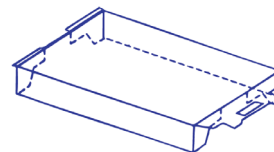
## BELLOWS FOLD DESIGN - ONE-PIECE STAPLE-STYLE - LEAK PROOF

- Curtain Coated Both Sides
- 12-8 oz. Rush Box Shipper 14-1/2 x 10-3/8 x 4-5/8"
- 560/Unit "Rush Perishable"
- 12 Can Shipper 14-1/2 x 10-3/8 x 6" 560/Unit
- 6-8 oz. 1 Pc. Shipper 10-1/4 x 7-1/4 x 4-1/2" 500/Unit
- Custom Prints Available



## 10" STAPLE-STYLE 50 LB. AND 100 LB. SEAFOOD COVER

- 10" Curtain Coated Both Sides
- 280/Unit



## F-LOCKING OR STAPLE-STYLE LID

- 3" Curtain Coated Both Sides
- 560/Unit

## ALSO AVAILABLE

### 50 LB. OYSTER WASH

- Curtain Coated Both Sides
- 17-7/8 x 11-11/16 x 8-3/8" Body 280/Unit
- 2-3/4" Lid 560/Unit

### 40 LB. OYSTER WASH - SPECIAL ORDER

- Curtain Coated Both Sides
- 17-7/8 x 11-11/16 x 6" Body 560/Unit
- 2-3/4" Lid 560/Unit

# STAPLERS AND SHIPPING SUPPLIES



## AVAILABLE FOR IMMEDIATE DELIVERY

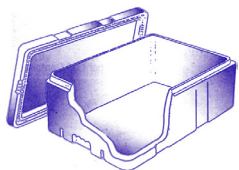
- C" and "A" Sizes
- Staples: 3/4" and 5/8" Depths
- Staplers:
  - Foot Bottomers
  - Side Arm
  - Post
  - Hand Clinchers
- Tapes, Strapping, Polybags, Stretch Wrap, Hand Trucks, and More

## INSULATED SHIPPING BOXES

- Sizes Available:
  - AS1 10/ Master 13 x 13 x 10" O.D.  
10 x 10 x 7" I.D. 1-1/2" Foam
  - AS2 5/ Master 14 x 14 x 15" O.D.  
11 x 11 x 12" I.D. 1-1/2" Foam
  - AS3 5/ Master 20 x 16-3/4 x 15" O.D.  
17 x 13-3/4 x 12" I.D. 1-1/2" Foam
  - AS5 5/ Master 22-1/2 x 16-1/2 x 10-1/2" O.D.  
21 x 15 x 8-1/2" I.D. 3/4" Foam
  - EQ 5/ Master 27-5/8 x 18-5/8 x 19-3/4" O.D.  
26-1/8 x 17-1/8 x 18-1/4" I.D. 3/4" Foam
- Additional Sizes Available on Special Orders
- Custom Imprint Available
- Master Complete with Box, Foam & Poly Bag

## STYRO COOLERS

- Sizes Available:
  - 10# 15-1/4 x 9-1/2 x 4-1/2" 7/8" Foam
  - 15# 15-1/4 x 9-1/2 x 8-3/4" 7/8" Foam
- Custom Printed Outer Box Available



## BULK BINS

- Heavy Duty Double Wall
- Octagon Construction
  - 38" - 50/Unit
  - 50" - 65/Unit
- Wax Impregnated
- Additional Sizes Available on Special Order



## HAND TRUCKS

- Super Light Design
- Straight Back Frame
- Multiple Handle, Plate, and Wheel Options Available - Special Order



## PALLET JACKS

- Features Safety Loop Handle
- Three Function Hand Control
- Foot Control for Lowering
- 230o Arc for High Maneuverability
- Nylon Wheels

# INSULATED SHIPPING CONTAINERS

BOX CODE	INSIDE DIMENSION LENGTH	INSIDE DIMENSION WIDTH	INSIDE DIMENSION DEPTH	WALL THICKNESS (INCHES)
27015	8	6	4-1/4	1-1/2" Wall
27025	8	6	7	1-1/2" Wall
27035	8	6	9	1-1/2" Wall
27045	8	6	12	1-1/2" Wall
27225	20-1/2	13-1/8	14	1-1/2" Wall
27255	20-1/2	13-1/4	12	1-1/2" Wall
27295	10-1/2	8-1/4	9-1/4	1-1/2" Wall
27158	12	10	5	1-1/2" Wall
27160	12	10	7	1-1/2" Wall
27162	12	10	9	1-1/2" Wall
27095	16-3/8	11-1/2	6	1-1/2" Wall
27647	20	15-1/2	13-5/8	3/4" Wall
27151	17	14	12-1/2	1-1/4" Wall
27467	12	12	12	1-1/8" Wall

All Insulated Shipping Containers Are Available with Outer Carton By Special Order Only.

## VICTORY ICE



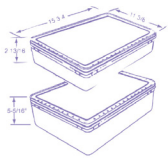
### GEL ICE PACKS

- Sizes Available:  
16 oz. Packs  
24 oz. Packs  
32 oz. Packs

# PLASTIC BAGS, BASKETS, AND TOTES

## POLYETHYLENE BAGS

SIZE	THICKNESS	# PER CASE
8 x 4 x 18	1.5 MIL	1000
12 x 8 x 30	2 MIL	500
12 x 8 x 30	3 MIL	250
14 x 30	3 MIL	500
14-1/2 x 10-1/2 x 25	2 MIL	250
17 x 12 x 18	1 MIL	1000
22 x 18 x 28	1 MIL	500
22 x 18 x 28	2 MIL	200
15 x 14 x 32 (AS -1/2)	3 MIL	150
24 x 17 x 35 (AS -3/5)	3 MIL	150
32 x 19 x 52 (AS -EQ)	3 MIL	75
45 x 32 x 52 (AS -EH)	3 MIL	75
51 x 42 x 94-Pallet Cover	1 MIL	125



### PLASTIC FILE TRAYS

- Universal Lid Fits all Four
- 10 lbs.  
#614
- 25 lbs.  
#1226
- Custom Printing Available - Lids Only



### GALLONS AND HALF GALLONS

- Printing available on lids and/or containers, 1-4 colors
- All containers meet USDA-USDC-FDA requirements
- Blast Freezer safe
- 8/12/16 oz. Cups
- Clear, Natural and White



### PLASTIC BASKETS



### PLASTIC TOTES